

LEASEHOLD



Apartment - First Floor (EPC Rating: B)

**57 WISSEN DRIVE, LETCHWORTH GARDEN CITY,
HERTS, SG6 1FT**

Offers Over

£235,000

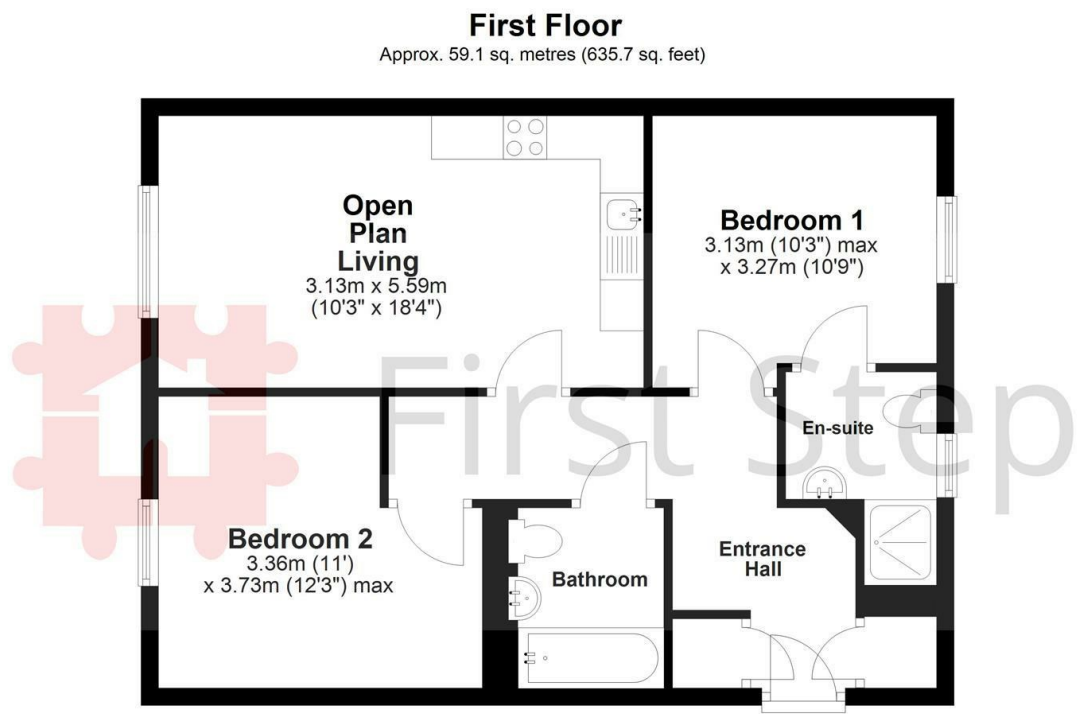


First Step



2 Bedroom Apartment - First Floor located in Letchworth Garden City

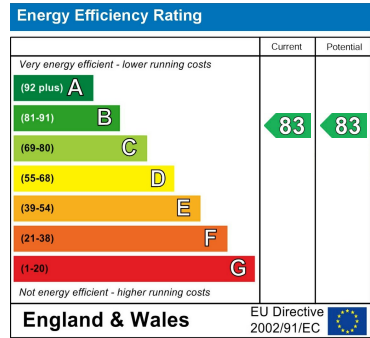
CHAIN FREE... 2 DOUBLE bedrooms... OPEN PLAN Kitchen/Dining/Lounge... EN-SUITE... allocated PARKING... Within EASY WALKING DISTANCE to town centre and train station... EXCELLENT storage... very good condition throughout...



Total area: approx. 59.1 sq. metres (635.7 sq. feet)
Floor Plan measurements are approximate & for illustrative purposes only. While we do not doubt the floor plans accuracy, we make no guarantee, warrant or representation as to the accuracy and completeness of the floor plan.
Plan produced using PlanUp.

Council Tax Band
C
Energy Performance Graph

Call us on
01462 659 730
sales@firststep.ltd
www.firststep.ltd



Agents Note: Whilst every care has been taken to prepare these particulars, they are for guidance purposes only. All measurements are approximate and are for general guidance purposes only and whilst every care has been taken to ensure their accuracy, they should not be relied upon and potential buyers are advised to recheck the measurements.